



Suncity Sheets

Stainless Steel Pipes | Sheets | Coils | Circles

Forged for Progress



About Us

FORGING A FUTURE MADE OF STEEL

Suncity Sheets is a premier manufacturer of brilliantly engineered steel products, that are known for their robust built, durability & quality across the world. For over 25 years, we have consistently escalated in the ranks of market as the preferred partner for a multitude of industries like Furniture, Kitchenware, Automobile & Ancillaries, Heat exchanger and Fabrication, Textile and Food Industry, Railways, Industrial Engineering and Oil and Gas.

Our strength lies in 2 of our state-of-the-tech industrial campuses, spread across a collective 50 acres, in Jodhpur & Mundra. These lean & scalable facilities are outfitted with the latest line of equipment, with an annual production capacity of 1,00,000 Metric Tons, and the capability to fulfill turnkey requirements of clients. Our forte has further augmented since our game changing facility, which is crowned to be one of India's largest steel plants, has come into existence. This advanced establishment is designed to reimagine industry paradigms, and is estimated to run at a production capacity of 3,00,000 Metric Tons annually.

Our high-class capabilities are further enhanced by our segregated units of quality assurance, maintenance, stores, commercial, management and personnel departments. These departments collectively ensure that all aspects of our business operate with maximum efficiency & effectiveness, 24x7, 365 days.

We have an axiom that we proudly speak at Suncity - The Sun Never Sets on Our Commitments. And we live up to this axiom by dedicating ourselves to deliver world-class steel products, with consistency of quality & cost of ownership to our customers.

Vision

To remain at the pinnacle of the steel industry as its premier player, by continuing to be steadfast on our principles of sustainability, transparency & quality in every aspect of our business.

Mission

- To become the preferred purveyor of steel products globally
- To add value in business of our clients through our products
- To continue harnessing the power of technology in every business process
- To lead the change by inculcating sustainable practices





FROM THE PEN OF OUR PROMOTERS

The story of Suncity Sheets begins in the year 1992, when imported steel products dominated the market. Commencing our operations as a small unit with a handful of employees we have today prospered into a company with 1000+ team members, and touching a multitude of businesses around the world.

Escalating in the ranks of the markets with swiftness & good practices, Suncity has today become a name that signifies trust & reliability in the steel industry and is considered a pioneer in bringing favorability for Indian products in global markets. With the trust of our customers, combined with our expertise, we have staged ourselves as the #1 player in India for our high-quality steel pipes, coils, circles & sheets. In global markets, we export to some of the biggest & renowned names, through our strong and widespread network of dealers & distributors.

Being a premier player in the business, the onus is always on us to ensure the delivery of not just world-class products, but to also lead by example and be the champion of responsible business operations. It is with this in mind that we have imbibed the concept of 'collective corporate good' in our ethos. Using this ideology, we have carefully created programs that help us consciously give back to the communities that we have grown. At the same time, we have undertaken continuous internal improvements to enhance the quality of our employees, by giving them a safe, healthy & nurturing work environment.

We are growing exponentially! And in this growth, we would like to take this opportunity to thank our brilliant team of seasoned professionals for their contributions in every aspect of our business. We'd like to thank our stakeholders, for trusting us, and making us their preferred purveyor of steel products. It is with such massive support that we are driven to be a company that offers products *Forged For Progress*.



PRODUCTS

We at SUNCITY produce Stainless Steel ERW / WELDED Pipe & Tube including round, square and rectangle, while covering maximum size range.



STAINLESS STEEL ERW PIPE

Outside Diameter	½” NB to 12” NB (21.3 mm to 323.85 mm)
Wall Thickness	Sch.5, Sch.10, Sch.20, Sch.40
Length	upto 12 meters
Austenitic Grade	304 / 304L, 316 / 316L, etc.
Specifications	ASTM A312 / SA312, A778 DIN, EN.

STAINLESS STEEL WELDED TUBE

Outside Diameter	12.7 mm to 127 mm
Wall Thickness	0.7 mm to 4 mm
Length	upto 12 meters
Austenitic Grade	304 / 304L, 316 / 316L, 316Ti,(EN 1.4462), 32750(EN 1.4410)
Specifications	ASTM A /SA 249,A269, SA 789, DIN, EN.



STAINLESS STEEL EFW PIPE

Outside Diameter	219.10 mm to 1422 mm
Wall Thickness	4.15 mm to 45 mm
Length	upto 12 meters
Austenitic Grade	304 / 304L, 316 / 316L, etc.
Specifications	ASTM A358 (Class 1, Class 2, Class 3, Class 4 & Class 5)

STAINLESS STEEL WELDED PIPE (ORNAMENTAL/DECORATIVE)

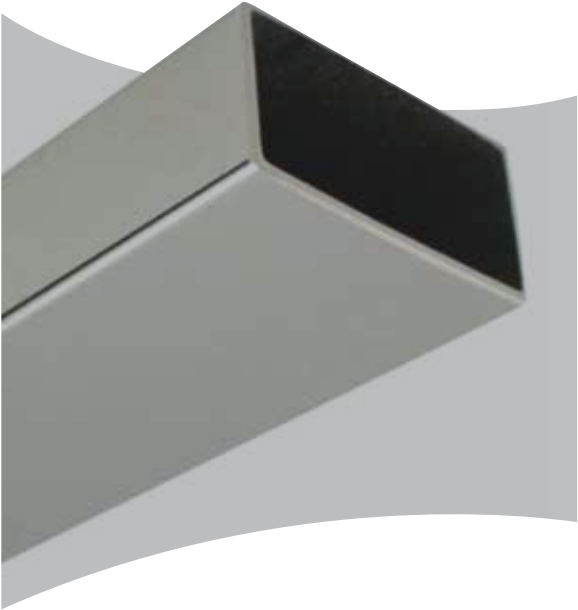


ROUND PIPE

Outside Diameter	9.52 mm to 127 mm
Wall Thickness	0.6 mm to 4.00 mm
Length	upto 12 meters
Austenitic Grade	202 / 304 / 316
Specifications	ASTM A554

SQUARE PIPE

Outside Diameter	10 X 10 mm to 100 X 100 mm
Wall Thickness	0.6 mm to 4.00 mm
Length	upto 12 meters
Austenitic Grade	202 / 304 / 316
Specifications	ASTM A554



RECTANGULAR PIPE

Outside Diameter	10 X 20 mm to 50 X 100 mm
Wall Thickness	0.6 mm to 4.00 mm
Length	upto 12 meters
Austenitic Grade	202 / 304 / 316
Specifications	ASTM A554

PRODUCTS



OVAL PIPE

Outside Diameter	33 x 13 mm
Wall Thickness	0.9 mm to 1.50 mm
Length	upto 7 meter
Austenitic Grade	200 series / 300 series
Specification	ASTM A554

SLOTTED PIPE

Outside Diameter	50.80 mm - 15x15 mm 40x40 mm - 15x15 mm 50x50 mm - 15x15 mm
Wall Thickness	0.90 mm to 2mm
Length	upto 7 meter
Austenitic Grade	200 series / 300 series
Specification	ASTM A554



STAINLESS STEEL CIRCLES

Wall Thickness	0.19 mm to 2 mm
Width	94 mm to 812.8 mm
Surface Finish	2B, no 4
Austenitic Grade	200 series / 300 series
Specification	ASTM A240

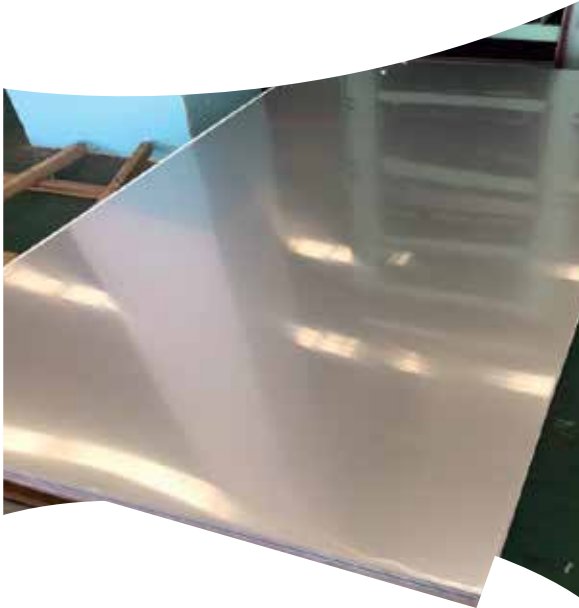


SLITTED COIL

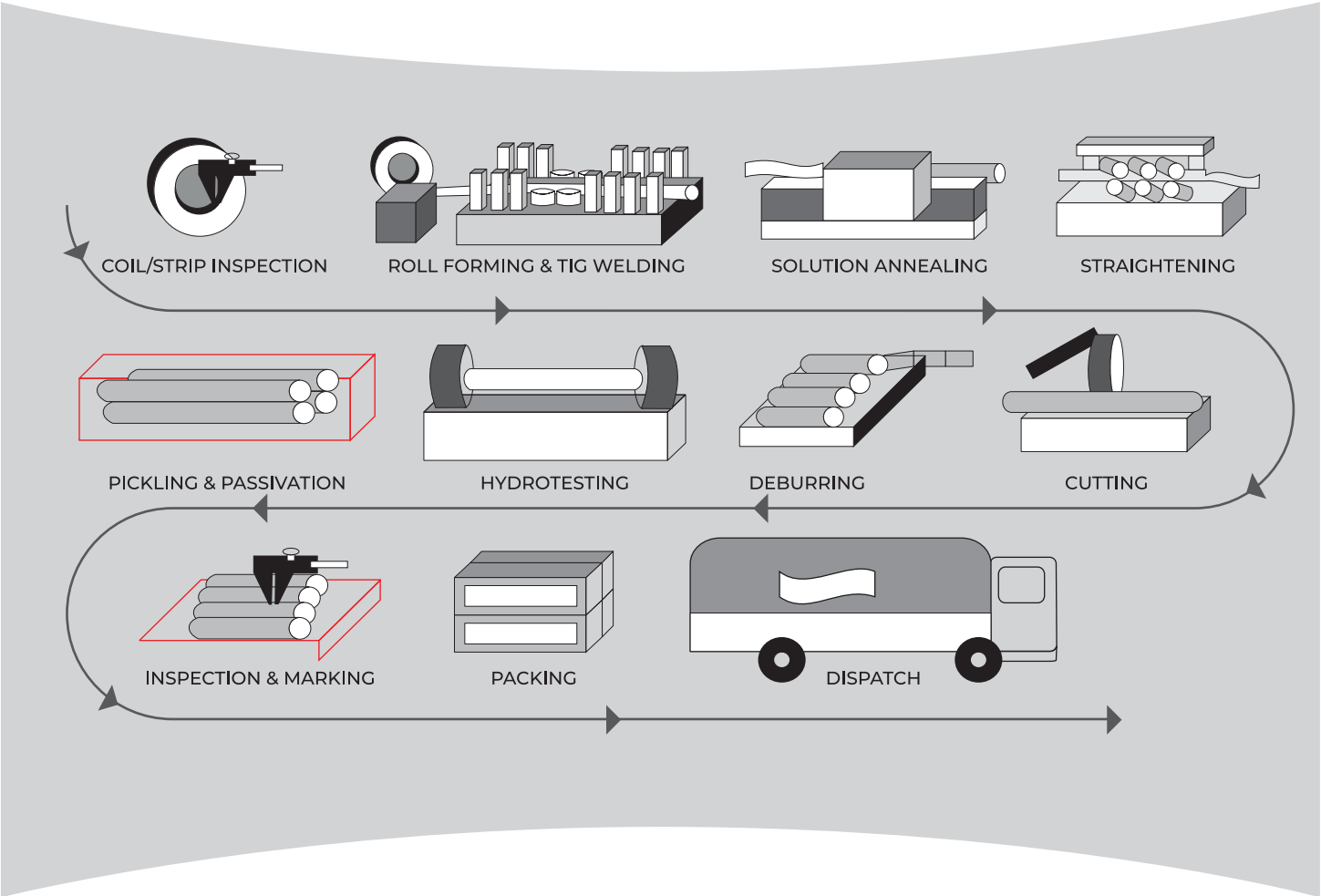
Wall Thickness	0.20 mm to 10 mm
Width	up to 1250 mm
Surface Finish	2B, BA
Austenitic Grade	200 series / 300 series
Specification	ASTM A240

STAINLESS STEEL SHEET PACKETS

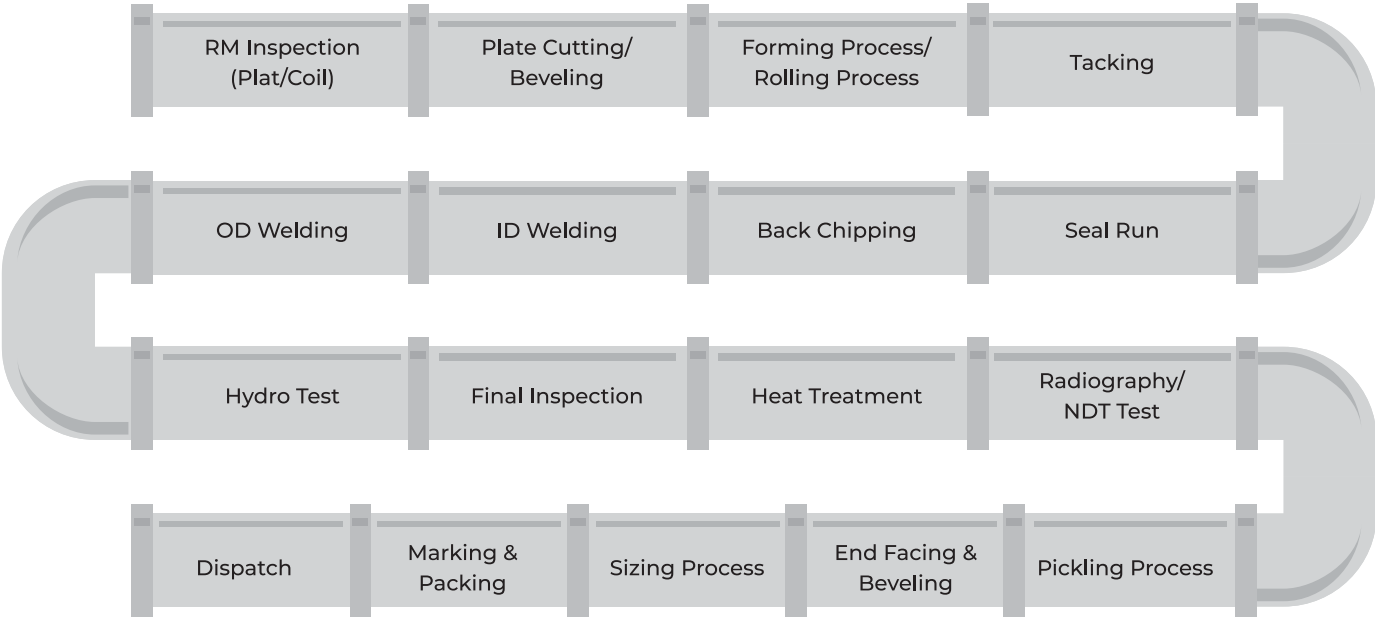
Wall Thickness	0.60 mm to 12 mm
Width	850 mm, 1000 mm, 1250 mm & 1500 mm
Surface Finish	2B, no 4 , no 6
Austenitic Grade	200 series / 300 series
Specification	ASTM A240



PROCESS FLOW CHART FOR ERW PIPES & TUBES



PROCESS FLOW CHART FOR EFW PIPE



ASTM SPECIFICATION WITH DIMENTION TOLERANCE FOR SS TUBE & PIPING



ASTM/ASME A/SA-249 welded Boiler, Super Heater, Heat Exchanger, Condenser Tubes.	Size Range O.D		O.D Tolerance	Thk Tolerance	Fixed Length Tolerance
	Under 25.00 mm		+/-0.10 mm	+10% / -10%	+3.0 mm / -0 mm
	25.00-40.00 mm Incl.		+/-0.15 mm	+10% / -10%	+3.0 mm / -0 mm
	40.00-50.00 mm Excl.		+/-0.20 mm	+10% / -10%	+3.0 mm / -0 mm
	50.00-65.00 mm Excl.		+/-0.25 mm	+10% / -10%	+5.0 mm / -0 mm
	65.00-75.00 mm Excl.		+/-0.30 mm	+10% / -10%	+5.0 mm / -0 mm
	75.00-225.00 mm Incl.		+/-0.38 mm	+10% / -10%	+5.0 mm / -0 mm
ASTM/ASME A/SA-268 Seamless & Welded Ferritic and Martensitic Tubes for General Service.	Size Range O.D		O.D Tolerance	Thk Tolerance	Fixed Length Tolerance
	Up to 12.70 mm Excl.		+/-0.13 mm	+15% / -15%	+3.0 mm / -0 mm
	12.70-38.10 mm Excl.		+/-0.13 mm	+10% / -10%	+3.0 mm / -0 mm
	38.10-88.90 mm Excl.		+/-0.25 mm	+10% / -10%	+5.0 mm / -0 mm
ASTM/ASME A/SA-269 Seamless & Welded Tubes for General Service.	Size Range O.D		O.D Tolerance	Thk Tolerance	Fixed Length Tolerance
	Up to 13.00 mm		+/-0.13 mm	+15% / -15%	+3.2 mm / -0 mm
	13.00-38.00 mm Excl.		+/-0.13 mm	+10% / -10%	+3.2 mm / -0 mm
	38.00-89.00 mm Excl.		+/-0.25 mm	+10% / -10%	+4.8 mm / -0 mm
ASTM/ASME A/SA-789 Seamless & Welded Ferritic/Austenitic (Duplex) Tubes for General Service.	Size Range O.D		O.D Tolerance	Thk Tolerance	Fixed Length Tolerance
	Up to 12.70 mm Excl.		+/-0.13 mm	+15% / -15%	+3.0 mm / -0 mm
	12.70-38.10 mm Excl.		+/-0.13 mm	+10% / -10%	+3.0 mm / -0 mm
	38.10-88.90 mm Excl.		+/-0.25 mm	+10% / -10%	+5.0 mm / -0 mm
ASTM/ASME A/SA-312 Seamless & welded and Heavily Cold Worked Austenitic Pipe for high-temperature and general corrosive service	Size Range O.D		O.D Tolerance	Thk Tolerance	Fixed Length Tolerance
	10.29-48.26mm Incl.		+0.40 / -0.80	(10.29mm)1/8" TO (73.03mm) 2.1/2") +20% / -12.5%	+6.0mm / -0mm
	48.26-114.30mm Incl.		+0.80 / -0.80		+6.0mm / -0mm
	114.30-219.08mm Incl.		+1.60 / -0.80	(88.90mm)3" TO (355.60mm)14" +22% / -12.5%	+6.0mm / -0mm
(EN 10217-7) Tolerances on OD & Wall Thk	Size Range O.D		O.D Tolerance	Thk Tolerance	Fixed Length Tolerance
	Up to 12.7		+/-0.10 mm	+ / -10%	+6 MM / - 0MM
	12.7 to 25.4		+/-0.13 mm		
	25.4 to 38.10		+/-0.20 mm		
	38.10 to 50.8		+/-0.25 mm		
	50.8 to 63.5		+/-0.30 mm		
	63.5 to 88.9		+/-0.36 mm		
	88.9 ro 127		+/-0.51 mm		

WEIGHT CHART

TUBES (SWG & BWG)

OD		10		12		14		16		18		20		22	
Inch	MM	(3.25 Thk)	(3.40 Thk)	(2.64 Thk)	(2.76 Thk)	(2.03 Thk)	(2.08 Thk)	(1.62 Thk)	(1.65 Thk)	(1.22 Thk)	(1.24 Thk)	(1.91 Thk)	(0.889 Thk)	(0.71 Thk)	(0.71 Thk)
		Weight Per mtr													
3/8"	9.52					0.38	0.39	0.32	0.32	0.25	0.258	0.17	0.19	0.16	0.16
1/2"	12.7			0.665	0.668	0.54	0.55	0.45	0.45	0.35	0.35	0.235	0.26	0.21	0.21
5/8"	15.87			0.875	0.908	0.70	0.72	0.58	0.58	0.447	0.456	0.34	0.33	0.27	0.27
3/4"	19.05	1.29	1.33	1.09	1.13	0.86	0.89	0.70	0.72	0.544	0.555	0.41	0.404	0.32	0.32
1"	25.4	1.80	1.87	1.51	1.57	1.19	1.23	0.96	0.98	0.74	0.75	0.56	0.546	0.44	0.44
1-1/4"	31.75	2.32	2.42	1.93	2.01	1.51	1.57	1.23	1.24	0.93	0.95	0.7	0.687	0.55	0.55
1-1/2"	38.1	2.84	2.96	2.35	2.45	1.84	1.9	1.48	1.51	1.13	1.15	0.85	0.828	0.66	0.66
2"	50.8	3.97	4.04	3.19	3.33	2.48	2.57	2	2.03	1.51	1.54	1.14	1.11	0.89	0.89
2-1/2"	63.5	4.91	5.12	4.03	4.21	3.13	3.24	2.52	2.56	1.9	1.94				
3"	76.2	5.94	6.02	4.87	5.09	3.77	3.91	3.03	3.08	2.29	2.34				
3-1/2"	88.9	6.97	7.29	5.7	5.97	4.42	4.58	3.55	3.61	2.67	2.73				
4"	101.6	8.01	8.37	6.54	6.85	5.07	5.25	4.07	4.13	3.06	3.13				
5"	127	10.06	10.51	8.21	8.58	6.34	6.5	5.08	5.17	3.84	3.9				

ERW PIPE SCHEDULE CHART

DN	NPS Desig	OD		SCH 5S		SCH 10S		SCH 20S		SCH 40S	
		IN	MM	Thk. MM	Weight Kg/Mtr	Thk. MM	Weight Kg/Mtr	Thk. MM	Weight Kg/Mtr	Thk. MM	Weight Kg/Mtr
6	1/8	0.405	10.29	1.00	0.23	1.24	0.28	1.50	0.33	1.73	0.37
8	1/4	0.540	13.72	1.20	0.37	1.65	0.49	2.00	0.76	2.24	0.64
10	3/8	0.675	17.15	1.20	0.47	1.65	0.63	2.00	1.09	2.31	0.87
15	1/2	0.840	21.34	1.65	0.81	2.11	1.02	2.30	1.54	2.77	1.29
20	3/4	1.050	26.67	1.65	1.05	2.11	1.30	2.50	1.97	2.87	1.71
25	1	1.315	33.40	1.65	1.03	2.77	2.13	2.50	2.94	3.38	2.54
32	1.1/4	1.660	42.16	1.65	1.65	2.77	2.73	3.00	3.39	3.56	3.44
40	1.1/2	1.900	48.26	1.65	1.93	2.77	3.11	3.00	4.30	3.68	4.11
50	2	2.375	60.33	1.65	2.40	2.77	3.99	3.00	6.08	3.91	5.52
65	2.1/2	2.875	73.03	2.11	3.70	3.05	5.26	3.50	8.49	5.16	8.77
80	3	3.500	88.90	2.11	4.51	3.05	6.45	4.00	9.76	5.49	11.47
100	4	4.500	114.30	2.11	5.85	3.05	8.36	4.00	12.35	6.02	16.07
125	5	5.563	141.30	2.77	9.50	3.40	11.60	4.50	17.04	6.55	21.08
150	6	6.625	168.28	2.77	11.35	3.40	13.82	5.00	22.38	7.11	28.68
200	8	8.625	219.08	2.77	14.80	3.76	20.00	5.50	33.77	8.18	43.18
250	10	10.750	273.05	3.40	22.61	4.19	27.80	6.35	42.35	9.27	60.31
300	12	12.750	323.85	3.96	31.25	4.57	36.00	6.35	50.40	9.53	73.84

QUALITY CONTROL & FACILITY



DESTRUCTIVE TESTING



FLARING TEST :

The test is conducted to establish the forming behavior of pipes & tubes which are expanded to a certain degree.

FLATTENING TEST :

This test is conducted to check the strength of the welded section subjecting it to extreme compression stress.

REVERSE FLATTENING TEST :

This test is to ensure that there are no cracks or blowholes on the welded section of the pipes.

HARDNESS TEST :

The hardness is the ability of a material to resist the pressing of a harder material into its surface. According to different test methods and adaptation range, pipe hardness has different units, brinell hardness is one of them.



IGC test Practice A, B, C & E :

It is mainly used as a screening test for testing the intercrystalline corrosion of austenitic stainless steel. It is suitable for testing the intergranular corrosion of some high molybdenum nickel base alloys. It is suitable for testing the intergranular corrosion of copper-containing alloys.

IMPACT TEST :

The impact test is a method for evaluating the toughness, impact strength and notch sensitivity of engineering materials. Engineers test the ability of a material to withstand impact to predict its behavior under actual conditions.

NON DESTRUCTIVE TESTING



HYDRO

Hydrotesting of pipes, pipelines and vessels is performed to expose defective materials that have missed prior detection, ensure that any remaining defects are insignificant enough to allow operation at design pressures, expose possible leaks and serve as a final validation of the integrity of the constructed system.



SPECTRO

To explore hybrid composites, providing practical information such as elemental type, chemical composition, optical and electronic properties, and crystallinity.



EDDYCURRENT

This is the preferred method to detect small, short, incomplete welds, and some subsurface and Inside Diameter conditions in stainless steel.

PMI

Non-destructive testing (NDT) method for verifying the chemical composition of metals and alloys.

APPLICATIONS

Pharmaceuticals

Chemical Plants

Sugar Industries

Fertilizer Plants

Automobile & Machinery

Paper & Pulp

Oil & Gas Industries

Water Treatment Plants

Dairies & Food Products

Railways

Furniture & Railings

Power Plants

Fabricators



CERTIFICATES



ISO Certificates



PED - AD2000
Mercblatt W0



TATA PROJECTS



We can supply our material with
well-known third-party inspection agencies like...



MUNDRA PLANT



JODHPUR PLANT





Suncity Sheets

Stainless Steel Pipes | Sheets | Coils | Circles

CORPORATE OFFICE

Plot No 27A/66- 68, 2nd Floor, Adarsh Society,
New ITI Circle, Jodhpur, Rajasthan, India - 342001
Tel 0291-2741103
Email info@suncitysheets.com

PLANT

Jodhpur

Suncity Sheets Pvt. Ltd.
SP-862-864 & 866-867, IVth Phase,
Boranada Industrial Area,
Jodhpur, Rajasthan, India – 342012

Mundra

Suncity Sheets Pvt. Ltd.
503/2, 520/P2 Guntha, Gundala,
Gandhidham, Mundra Highway,
Mundra (Kutch), Gujarat, India – 370421

www.suncitysheets.com